

# KMD

---

# JUSTICE





# Pioneering Spaces

# CREATIVITY AND INNOVATION

KMD Justice has successfully completed over 350 criminal justice projects in the past 25 years. Exemplifying this success is the Contra Costa County Adult Detention Facility, in Martinez, California. This design created a paradigm that became widely recognized as the most innovative and successful “new generation” adult detention facility in the country and the most visited facility of its type in the world.

**For five decades KMD Architects has combined solid research, innovative design, and creative vision to stake its place as one of the largest architectural firms in the world.** Our work is as diverse as the locations in which it can be found. KMD designs have been built in over 30 states and 15 countries around the world, such as The Kingdom of Saudi Arabia, United Arab Emirates, France, Japan, China, Malaysia, Korea, England, and Mexico. KMD’s designs serve clients in the worlds of government, commercial, retail, healthcare, academia, corporate offices, housing, hospitality and urban planning.

KMD Justice (KMDJ) is a subdivision of KMD whose staff devote all of their professional attention exclusively to the planning, design, and construction of criminal justice and justice related project types. Established in 1990, KMDJ has periodically been **ranked as one of the ten largest providers of criminal justice design services in the world** by the Engineering News Report (ENR) Annual Market Survey and World Architecture Magazine. KMDJ has provided professional services on over 350 justice

related projects which have included detention, corrections and courts facilities for both juvenile and adult/male and female populations, law enforcement facilities, forensic facilities, coroner facilities, and secured healthcare/mental health/special needs facilities. These projects have varied in size from a 6-bed juvenile detention housing addition for El Dorado County, California, to a 15,000-bed national penitentiary in the Philippines, while ranging in costs from \$1 million to \$300 million.

Having exhibited and published its work in numerous industry periodicals, **KMDJ has produced several nationally recognized, industry-leading projects and has firmly established its reputation as a leader in justice architecture.** In the past ten years, 27 KMDJ projects have been selected for inclusion in the American Institute of Architect’s (AIA) annual Justice Facilities Review. In three of those years all four projects submitted by KMDJ were selected. Six projects also received special AIA Certificates of Merit for particular excellence in planning and design. Collectively, this performance is better than any other architect in the country in the same period.



# Juvenile Justice



# San Mateo County Youth Services Center

SAN MATEO, CALIFORNIA



The team of Turner Construction/KMD Justice was retained by the County of San Mateo to provide full program verification, master planning, planning, design and construction services for this 318,000 SF, full-service juvenile justice campus located in a suburban area of the County. Major components of the project include 1) the Juvenile Hall composed of the Assessment Center, Intake/Release, Housing (including a dual diagnosis unit), Visiting, Facility Support, Programs, Health Services (Infirmary), Mental Health services, a Dining Hall, a School, and a Gymnasium; 2) Girls Camp and Administration; 3) Youth Services, composed of the Juvenile Court, Probation Department Administration, Juvenile Probation, community School/Day Reporting; and 4) two Group Receiving Homes. The facilities for the campus are programmed and designed to facilitate sharing of services in an environment that is supportive of the clients (youth, family and community), as well as service providers which include the Juvenile Courts, Health Service Agency, Mental Health, Human Services Agency, the County Office of Education, Public Works, and the Probation Department.

The Youth Services Center in its entirety was one of the first two juvenile justice facilities in the United States to be LEED certified and registered with the United States Green Building Council (USGBC). The Girls Camp (a self-contained, standalone "mini-campus" on the same site) independently received a Silver Certification.

**CLIENT:**

County of San Mateo

**CONSTRUCTION COST:**

\$129,800,000

**COMPLETION DATE:**

2006

**PROGRAM:**

317,948 SF

240 Beds

2 Courts

**AWARDS:**

AIA Justice Facilities

Review, 2007

Honorable Mention, San

Mateo County, 2008

Certificate of Recognition,

California State Senate,

Legislature Assembly, 2008



# Lane County Juvenile Justice Center at John Serbu Youth Campus

EUGENE, OREGON



KMD Justice was retained to program, master plan, and design the new replacement 96-bed juvenile detention facility at the John Serbu Youth Campus. The 114,000 SF split-level detention facility offers a complete array of youth services in a campus style plan. The six housing units are designed to provide a direct frontal view effectively from any location in the day room area. The facility also features substantial security electronics. Visitation and support areas (e.g., medical and food services) are adjacent to the housing units, and the facility includes three outdoor recreation yards and a gymnasium. The use of abundant natural light, interesting architectural volumes, and a “soft” color and furnishing scheme create a normative environment designed to promote rehabilitation. The facility also houses the county’s Department of Youth Services (intake, probation, parole, and detention center), Juvenile Court, Court Clerk, District Attorneys, and defense attorneys, Court Appointed Special Advocates (CASA), and the Oregon Youth Authority. The services provided at the John Serbu Youth Campus are a treatment center, shelter care facility, and work-training center.

The Center/Campus serves as a referral hub for the total spectrum of youth services located in the county detention component and emphasizes the campus type environment of the supporting program facilities.

**CLIENT:**

Lane County

**CONSTRUCTION  
COST:**

\$31,801,870

**COMPLETION  
DATE:**

2000

**PROGRAM:**

140,300 SF  
96 Beds  
2 Courts

**AWARDS:**

American Institute  
of Architects Award  
Citation for the Justice  
Facilities Review  
2001-2002



# Fresno Juvenile Justice Campus

FRESNO, CALIFORNIA



KMD Justice was retained to develop a master plan and master schematic design, to prepare a detailed cost estimate, and to develop a phasing plan for a new juvenile services complex to replace two existing facilities. KMDJ's services included review of the current needs assessment and validation of its results, creation of a master plan, development of schematic design, production of outline specifications for the development phases, and submission of a detailed estimate of probable cost.

The new juvenile justice campus is programmed for two phases. It contains four facilities: detention, commitment, support services, and courts. The campus incorporates interdependent departments involved in the delivery of pre- and post-adjudicated juvenile justice, detention, and commitment system activities, as well as housing for pre- and post-adjudicated youths. Although the initial emphasis of the facility was on providing additional beds, the campus incorporates all functions of the continuum of services from initial custody through post-adjudication placement and custodial monitoring activities.

**CLIENT:**

Fresno County

**CONSTRUCTION COST:**

\$112,092,122

**COMPLETION DATE:**

2006

**PROGRAM:**

341,596 SF  
200 Acre Site  
480 Beds (master planned for 1,400 beds)

**AWARDS:**

AIA Justice Facilities Review, 2000-2001



# Multnomah County Juvenile Justice Complex

PORTLAND, OREGON



KMD provided master planning and full architectural services for Multnomah County's new Juvenile Detention Facility and related court functions. The project involves a complete replacement of the existing Juvenile Justice Complex. The work was accomplished in several phases of partial demolition of existing facilities and construction of new to allow for continued occupancy and operations throughout the process.

The building houses six juvenile courts, district attorney's offices, Juvenile Justice Division Departments (intake counseling, probation services, etc.), and detention housing consisting of 191-beds in individual sleeping rooms. A mechanical and electrical central plant operations building services the complex. All site utilities, parking, landscaping and fencing were completely replaced or upgraded to comply with current codes and regulations.

**CLIENT:**

Multnomah County

**CONSTRUCTION**

**COST:**

\$33,353,130

**COMPLETION**

**DATE:**

1996

**PROGRAM:**

185,164 SF

191 Beds

6 Courts

**AWARDS:**

AIA Justice Facilities

Review, 1997-1998





# City of New York Crossroads and Horizon Juvenile Centers

BROOKLYN & THE BRONX, NEW YORK



KMD Justice designed the two secure juvenile detention facilities – 124-bed Bronx facility and the 132-bed Brooklyn facility – which replaced the Spofford Juvenile Center. The extensive involvement of the Department of General Services and Department of Juvenile Justice contributed to the conceptual design charrettes held in New York City. The direct supervision facilities feature admissions, educational components (classrooms, library, computer labs, and gymnasium), cafeteria, chapel, community meeting room, 24-hour medical services (mental health, dental, and pediatric medicine), custody and care, and support functions.

**CLIENT:**

City of New York Dept. of Juvenile Justice

**CONSTRUCTION COST:**

Brooklyn: \$23,827,000  
The Bronx: \$22,564,773

**COMPLETION DATE:**

1998

**PROGRAM:**

Brooklyn: 119,000 SF,  
132 Beds  
The Bronx: 113,000 SF,  
124 Beds

**AWARDS:**

AIA Justice Facilities  
Review, Citation Award  
1998-1999



# Ridge View Academy (Academic Model Juvenile Facility)

AURORA, COLORADO



KMD Justice provided architectural programming, planning, and design services for this new 500-bed juvenile correctional campus. The 240,000 SF facility is based upon the conceptual facilities program and site master plan for the Academic Model Juvenile Facility produced by KMD Justice and CSNA Architects. Seven residential buildings and several other support buildings occupy 80-acres of the total 565-acre site. The juveniles are screened during their assessment and orientation. Ridge View will not accept sex offenders, juveniles with mental health or substance abuse needs, or who pose a threat to public safety. The primary program is developed around a highly structured, closely supervised environment with academic and vocational programs.  
(In association with CSNA Architects)

**CLIENT:**

Colorado Division of  
Youth Corrections

**CONSTRUCTION  
COST:**

\$37,000,000

**COMPLETION  
DATE:**

2001

**PROGRAM:**

240,000 SF  
500 Beds

**AWARDS:**

Colorado Construction,  
Outstanding Public  
Project, 2000

AIA Justice Facilities  
Review, 2003-2004



# Washoe County Jan Evans Juvenile Detention Facility

RENO, NEVADA

KMD Justice programmed, planned, and designed a new juvenile detention facility to replace the existing 43 year old Wittenberg Hall. The 108-bed facility is expandable to 144-beds and configured to incorporate a direct-supervision model, housing juveniles of various classifications in 9- or 12-bed, single wet room housing units. Support services are shared among the housing unit clusters and include admissions, education, recreation, medical, and support functions. Additional components include staff, community services, probation, central administration, and juvenile court functions. The project was completed within budget and ahead of schedule.

**CLIENT:**

Washo County

**CONSTRUCTION  
COST:**

\$21,000,000

**COMPLETION  
DATE:**

2004

**PROGRAM:**

83,900 SF

108 Beds

**AWARDS:**

AIA Justice Facilities

Review, 2005-2006

Washoe County Design

Review, Award of Merit,

2004

# King County Youth Service Center

SEATTLE, WASHINGTON

KMD was selected by King County to provide planning and design services necessary for the replacement of the Youth Service Center Courthouse. The initial Pre-Design phase includes updating the Site Master Plan to accommodate the long term space needs for King County's juvenile and family law courts. Services include community outreach for input into the development plan.

KMDJ was again selected to provide programming services for the new facility in 2012.

**CLIENT:**

King County

**CONSTRUCTION  
COST:**

\$120,000,000 (est.)

**COMPLETION  
DATE :**

Site Master Plan and

Pre-Design: 2011

Programming: 2014

**PROGRAM:**

160,000 SF

LEED Gold Target



# Larry J. Rhoades

## Kern County Juvenile Treatment Facility

BAKERSFIELD, CALIFORNIA

KMD Justice was retained to provide programming, master planning, and full design services for the “new-generation” podular design treatment facility in a campus setting. The 71,626 SF juvenile facility has 120 beds that are expandable to 240. Features include a major education program consisting of eight classrooms, a gymnasium, and an outdoor soccer and baseball field. Treatment components include a mental health facility, aftercare maintenance, and over two acres of outdoor program space. A full-service cafeteria-style kitchen provides food preparation for a dedicated dining room.

**CLIENT:**

Kern County

**CONSTRUCTION**

**COST:**

\$16,026,975

**COMPLETION**

**DATE:**

2004

**PROGRAM:**

71,626 SF

120 Beds

**AWARDS:**

AIA Academy of  
Architecture for Justice  
Knowledge Community  
(AAJ) Justice Facility  
Review, Certificate of  
Merit, 2005-2006

## Contra Costa Juvenile Hall

MARTINEZ, CALIFORNIA

Contra Costa County Juvenile Hall is a self-supported 120,000 SF addition to the existing juvenile hall complex. The new 240-bed facility houses eight 30-bed housing pods located on two floors and areas for kitchen and laundry. The eight housing pods allow for segregation according to security and classification type. Each 30-bed pod conforms to the “new generation” podular-type design and utilizes cell tiers to maximize building efficiency. The facility is designed for pre-adjudicated minors.

**CLIENT:**

Contra Costa County

**CONSTRUCTION**

**COST:**

\$27,000,000

**COMPLETION**

**DATE:**

2005

**PROGRAM:**

120,000 SF

240 Bed Addition

**AWARDS:**

AIA Justice Facilities  
Review 2006-2007



# Solano County Juvenile Detention Center Complex

FAIRFIELD, CALIFORNIA

KMD Justice was commissioned to provide full architectural services for the new 90-bed juvenile detention replacement facility, providing 30 additional treatment beds. It is comprised of three 30-bed housing units with all the program, recreation, support, and administrative areas. Each unit contains a day room, classrooms, and interview, dining and personal hygiene areas. Two units are secure detention beds and the third is for the treatment program. The facility is designed around thoughtful economies – the use of single and double rooms in the detention units, reducing cost and space while providing operational flexibility, and the convertibility of the treatment bed units to use as detention if needed.

**CLIENT:**

Solano County

**CONSTRUCTION COST:**

\$12,727,717

**COMPLETION DATE:**

2004

**PROGRAM:**

69,300 SF  
90 Beds

# Steven Z. Perren Juvenile Justice Complex

VENTURA, CALIFORNIA

KMD Justice was retained to program, master plan, and provide full design services for this new 420-bed juvenile justice complex. The facility contains 180 juvenile commitment beds and 240 detention beds and is designed to accommodate an expansion of 120 additional beds. As a direct supervision facility, the classrooms and program spaces are at the housing unit levels in order to minimize youth movement within the facility. A juvenile courts component, also designed by KMDJ, including six courtrooms was completed in 2005 as part of the overall justice complex.

**CLIENT:**

Ventura County

**CONSTRUCTION COST:**

\$43,191,000

**COMPLETION DATE:**

2004

**PROGRAM:**

205,327 SF  
420 Beds

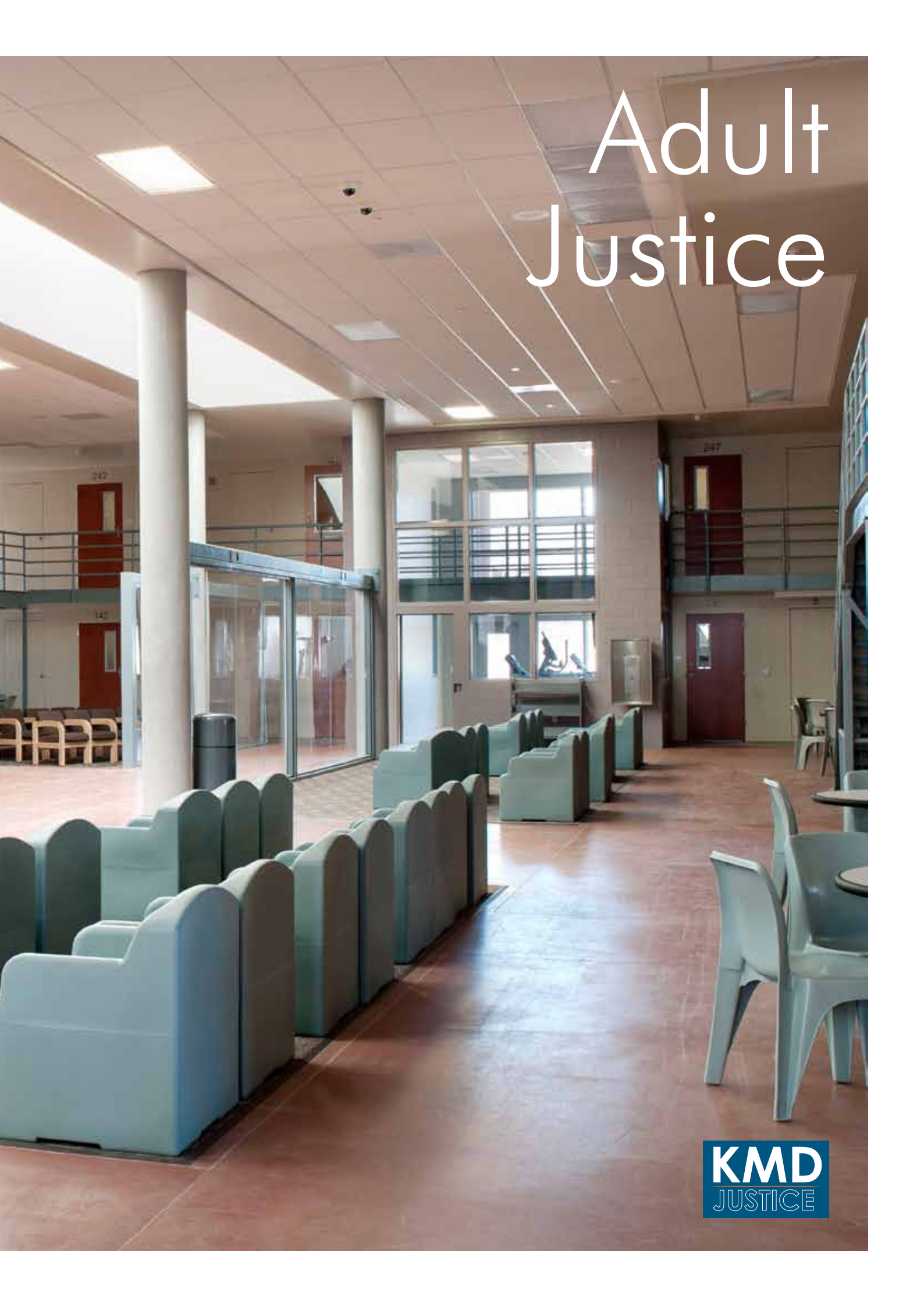
**AWARDS:**

AIA Justice Facilities  
Review, 2005-2006





# Adult Justice



# Joint Regional Correctional Facility Southwest (Naval Consolidated Brig Miramar)

SAN DIEGO, CALIFORNIA



KMD Justice was part of a design/build team with Clark Construction to provide planning and design services for the new 99,000 square foot regional confinement facility at the U.S. Marine Corps Air Station Miramar. The new Naval Consolidated Brig Miramar is a multi-story structure comprised of concrete masonry units with precast concrete cells. Components include a new Level 1 facility for 120 male service members and a Level 2 facility for 80 female service members. Reflecting both its detention and correctional missions, the facility's male and female populations include both pre-adjudicated as well as post-adjudicated service members serving sentences up to seven years. The female housing unit is actually designed to house 6 different population groups reflecting various legal, medical, behavioral and disciplinary classifications. Of the 80 female beds, 10% are pre-trial beds and 16% are segregation beds. The project was designed to achieve LEED® Silver certification.

**CLIENT:**

U.S. Navy

**CONSTRUCTION COST:**

\$30,837,000

**COMPLETION DATE:**

2011

**PROGRAM:**

99,000 SF

180 Beds





# Federal Bureau of Prisons – Federal Correctional Institution / Federal Bureau of Prisons Privatization Project – Taft Correctional Institution

TAFT, CALIFORNIA



The Taft FCI was a site adaptation of the FCI Estill Documents. KMD Justice had a specific contract responsibility on this project to review a VE report developed on a prior adaptation of the construction documents and to make appropriate implementation recommendations to the FBOP relative to the site adaptation to Taft, California. KMD Justice, however, also provided its own innovative VE suggestions to the further significant economic advantage of the project. Originally designed in masonry cavity-wall construction, KMD Justice recognized the efficacy of a tilt-up construction in the Southern California building trade marketplace and this VE recommendation was implemented on both the original core buildings and on the revised housing units (originally designed for 850 inmates).

**CLIENT:**

Federal Bureau of Prisons

**CONSTRUCTION COST:**

\$75,000,000

**COMPLETION DATE:**

1996

**PROGRAM:**

711,000 SF

1,230 Beds

**AWARDS:**

AIA Justice Facilities

Review, 1998-1999

Marvin M. Black

Award for Excellence in

Partnering, 1996



# Federal Bureau of Prisons Federal Correctional Institution

BERLIN, NEW HAMPSHIRE



KMD Justice in association with Edward Rowse Architects teamed with design-build contractor Bell Corporation for the execution of site-adapted contract documents and construction for this 45,000 square meter, 1,230-bed medium security Federal Correctional Institution. The campus is comprised of several one and two story buildings, a Federal Prison Industries (UNICOR) facility, three (3) general housing buildings of four levels each and an additional smaller two level housing unit, within a secured compound. A Central Administration Building, Central Plant, Warehouse, Garage/Landscape, sewage grinder building and lift station, water storage tank and other buildings and structures necessary to support the facility will be located outside the secure compound. An access road and building pad for a future training building with an outside recreation area and the utility connections for this facility are included in the development. In addition, a minimum security Federal Prison Camp (FPC) with housing and support facilities for a rated capacity of 128 inmates will be located outside the secured compound.

**CLIENT:**  
Federal Bureau of Prisons

**CONSTRUCTION  
COST:**  
\$242,000,000

**COMPLETION  
DATE:**  
2010

**PROGRAM:**  
711,000 SF  
1,230 Beds

**AWARDS:**  
DBIA National Design-  
Build Merit Award, 2011



# Federal Bureau of Prisons Correctional Complex (FCC) Victorville

VICTORVILLE, CALIFORNIA



The Victorville FCC is a large, adult correctional facility developed in a campus plan format and delivered utilizing the design/build process. It was designed to comply with detailed pre-existing planning standards and consists of 64-bed pods oriented around a central support service core. The project was schedule sensitive and was completed both within budget and ahead of schedule. The FCC was collocated with an existing operational Federal Correctional Institution (FCI).

**CLIENT:**

Federal Bureau of Prisons

**CONSTRUCTION COST:**

\$232,441,208

**COMPLETION DATE:**

2003

**PROGRAM:**

1,172,000 SF  
1,230 Beds

**AWARDS:**

FCC: AIA Justice Facilities Review 2000-2001  
FCI: Marvin M. Black Award for Excellence in Partnering, 2004



Federal Correctional Institution (FCI)



United States Penitentiary (USP)

# California State Prison at Kern County at Delano II

DELANO, CALIFORNIA

Serving as the Architect of Record, KMD provided complete architectural services to the California Department of Corrections/for this \$287 million, 1,300,000 square foot, 5,072-bed Maximum Security Prison. Because of its sheer magnitude at over 1.3 million square feet spread across nearly 100 separate buildings and associated site structures, the project was divided into ten separate bid packages.

**CLIENT:**

California Department of Corrections

**CONSTRUCTION COST:**

\$287,143,033

**COMPLETION DATE:**

2005

**PROGRAM:**

1,300,000 SF  
5,072 Beds

# California Department of Corrections Pelican Bay State Prison

CRESCENT CITY, CALIFORNIA

The 2,200-bed maximum-security Pelican Bay State Prison is a site adaptation of the California Department of Corrections (CDC) "Best Buildings" prototypes, which were developed over seven years. KMD Justice initiated a plan to standardize the prototype buildings and the method of documentation. The standardization resulted in significant life cycle cost savings and enhanced and lower construction costs. Pelican Bay's 1,164,200 SF of buildings are expandable to approximately 4,400 beds with very little modification. This self-sufficient prison has its own central power plant, water distribution, and waste treatment.

**CLIENT:**

California Department of Corrections and Rehabilitation

**CONSTRUCTION COST:**

\$170,034,395

**COMPLETION DATE:**

1990

**PROGRAM:**

1,164,200 SF  
2,200 Beds



# Coalinga State Hospital 1,500 Bed Secure Treatment Facility

COALINGA, CALIFORNIA



KMD Justice (KMDJ) was selected to provide full architectural and engineering services for a new, standalone housing and treatment facility serving California's sexually violent predator population. The facility's 1.2 million gross square feet include 1,500 beds, 900,000 GSF for clinical services and programs, 158,000 GSF for support services, 75,000 GSF for administration, and 65,000 GSF for plant operations. While all treatment and program services within the surrounding fence line are provided by the Department of Mental Health, perimeter security is provided by the Department of Corrections. The scope of KMDJ's work included site selection, master planning, and program verification (pre-design services); schematic design through bidding (full design and interiors); and construction administration services.

The facility represents "Best Practices" for a treatment environment and incorporated the concepts of "Evidence-Based" and "Humanistic" Design as a platform for the project's development and execution.

**CLIENT:**

California Department of  
Mental Health

**CONSTRUCTION  
COST:**

\$302,801,963

**COMPLETION  
DATE:**

2005

**PROGRAM:**

1,200,000 SF  
1,500 Beds



# Legal Offender Unit at Western State Hospital

STEILACOOM, WASHINGTON



KMD Justice conducted the feasibility study and was awarded the design and construction contract for the new Legal Offender Unit within Western State Hospital's East Campus. The 240-bed facility includes two Acute Care Wards, two Sub-Acute Care Wards, and four Extended Care Wards; as well as an Activity Center, an Admissions/Outpatient Evaluation Suite, an Administration Suite, and related support functions. The self-sufficient, multi-classification facility provides the majority of criminal forensic mental health evaluation for the Washington State Division of Mental Health in Western Washington. As a direct supervision management model facility, which encourages staff/patient interaction, the Unit has a maximum-security perimeter with different levels of security in various program components.

**CLIENT:**

Washington Department  
of Social and Health  
Services

**CONSTRUCTION  
COST:**

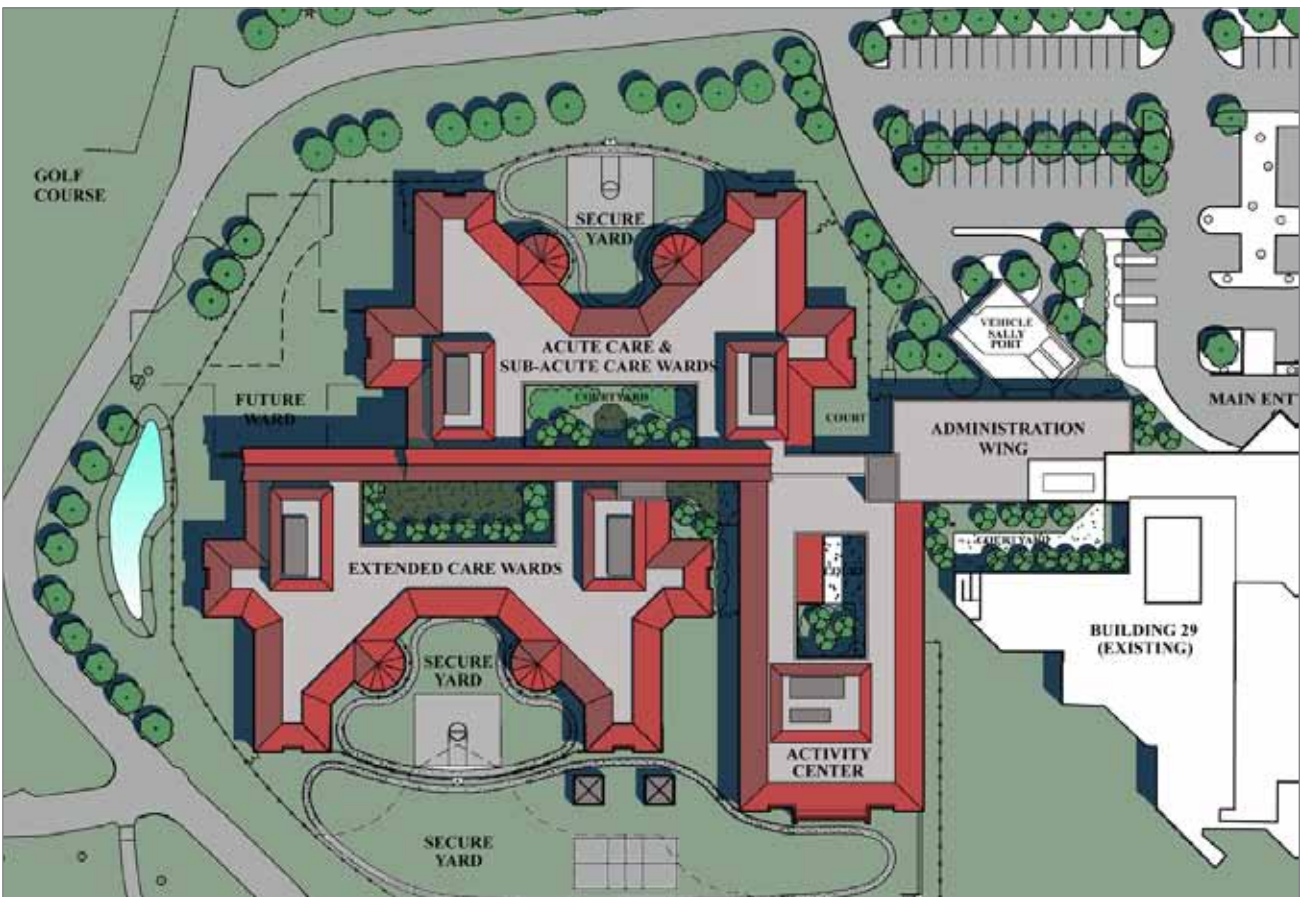
\$33,300,000

**COMPLETION  
DATE:**

2001

**PROGRAM:**

165,000 SF  
240 Beds



# State Security Hospital at Larned State Hospital

LARNED, KANSAS

KMD Justice provided program verification, planning, and design the new State Security Hospital at Larned State Hospital. The ADA compliant facility has three residential communities, small infirmary, consolidation of existing programs, and Kansas Department of Corrections 90-bed addition. The residential communities are composed of two treatment communities serving male patients referred from Kansas District Courts and Kansas Department of Corrections; and one community housing three units: 30-bed forensic evaluation, 20-bed female evaluation and treatment, and 20-bed security behavior.

The new Hospital achieves following objectives: consolidation of programs into one facility, transforms staff time to active treatment in client interaction, produces cost savings from reduced need for outside hospitalization, modernizes allied clinical operations to take advantage of emerging and new technologies, and facilitates expansion of the Sexual Predator Treatment Program. (In association with HTK Architects, Architect Of Record)

**CLIENT:**

Kansas Department of Administration

**CONSTRUCTION COST:**

\$43,075,678

**COMPLETION DATE:**

2005

**PROGRAM:**

301,143 SF  
250 Beds

# Multnomah County Wapato Corrections Facility

PORTLAND, OREGON

The new Multnomah County Wapato Corrections Facility is a 155,400 SF interconnected adult correctional facility with a 225-bed medium-security jail complex and a 300-bed program detention facility. Transport, medical clinic, dietary, laundry, and administrative areas are shared by the jail and program detention facility. The 75-bed direct supervision jail housing units are designed to bring support services to the dorms, thus minimizing inmate movement. Each jail housing unit has program rooms and areas for outdoor recreation, day room, and dining. The Program Detention Complex is comprised of 50-bed dormitories, each with day room, outdoor recreation, and program rooms.

KMD Justice provided design and documentation and also implemented a site and facility master plan indicating phased growth to a maximum capacity of 2,000 beds including the location for various related support services.

**CLIENT:**

Multnomah County

**CONSTRUCTION COST:**

\$42,000,000

**COMPLETION DATE:**

2004

**PROGRAM:**

155,400 SF  
525 Beds



# Multnomah County Inverness Jail

PORTLAND, OREGON



KMD Justice provided master planning, site analysis, programming, design, and construction administration services for the original Inverness Jail and subsequent addition and expansion of the facility. The 926-bed medium-security facility was built in three phases. Circulation radiates from a central control station and segregates prisoners, staff and public. Each of the dormitories has an indoor recreation room and outdoor exercise courtyard. After completion of the addition, Multnomah County applied for ACA Accreditation and received a 99+ score, which is one of the highest ratings for any facility in the country.

*“The facility design has allowed management to better utilize staff time because of the easy maintenance of the facility and the lines that provide better visibility. The design has had several residual effects...the operation has a nearly 40% reduction in sick leave usage compared to other facilities of comparable size...morale is much more positive because of the design than ever anticipated.”*

– Gary Walker, past Jail Commander

**CLIENT:**

Multnomah County

**CONSTRUCTION COST:**

Original Facility:

\$4,967,044

Expansion #1:

\$4,496,466

Expansion #2:

\$36,410,000

**COMPLETION DATE:**

Original Facility: 1988

Expansion #1: 1991

Expansion #2: 1999

**PROGRAM:**

181,300 SF

926 Beds



# San Diego County Womens Detention Facility

SANTEE, CALIFORNIA



KMD is part of a design/build team providing architectural planning and design services to the County of San Diego for a new 1,216-bed women's detention campus on 45-acres. The site of the new facility includes the existing Las Colinas Detention Facility (LCDF) which will be demolished. The replacement facility will capture as many of the "normative" qualities of the existing facility as possible. The San Diego County Women's Detention Facility (SDCWDF) operational and facility design approach is to adopt and expand upon the campus-like model of the existing facility. The new facility will be multi-custody and will facilitate the implementation of the San Diego Sheriff's Department (SDSD) inmate management philosophy, which is program-based and intended to reduce repeat offending and recidivism.

The design features a residentially-scaled campus plan concept minimizing the visual "message" of a detention facility. Inmate housing is developed in clusters of from two to four units around exterior courtyards. Administration and inmate visitation buildings will be the public face of the facility. The project is designed to LEED Silver certification.

The SDCWDF will be constructed in two phases, maintaining operation of the existing LCDF while the first phase of the complex is being built immediately to the east and north of the facility. (In association with HMC Architects)

**CLIENT:**

County of San Diego

**CONSTRUCTION COST:**

\$289,000,000 GMP

**COMPLETION DATE:**

2015

**PROGRAM:**

512,537 SF

1,216 Beds



# San Francisco Jail #3 San Bruno Complex

SAN BRUNO, CALIFORNIA



The new 270,000 SF two-story facility is a design/build project for the City and County of San Francisco based upon the bridging documents provided by the County. However, in order to reduce construction costs to meet the Owner's budget, KMD Justice, as part of a design/build team led by AMEC, redesigned the project consistent with program criteria provided by the Sheriff's Department and subsequently prepared the construction documents and provided construction administration services for the 768-bed jail project. The new facility replaced San Francisco's existing Jail #3 located on the same site in a suburban area near the city of San Bruno.

The 768-bed jail is comprised of eight 96-bed housing pods, each pod incorporating two 48-bed housing units. The housing units/pods are stacked on two floors/four levels (mezzanined). With cells being double-bunked the jail is designed to operate as a direct supervision facility. The tiered housing units incorporated two unique design features in that all the cell fronts are fully glazed and an upper level, fully glazed, secure guard station was provided, a combination which allows full visual supervision of two units simultaneously by a single staff member during nighttime hours while inmates are in their cells, thereby reducing staffing. Other components of the facility include an administration building with services for food and laundry, visitation, a central plant, staff and visitor parking, and a secured vehicle sallyport for prisoner transportation as well as supply delivery.

**CLIENT:**

City and County of San Francisco

**CONSTRUCTION COST:**

\$95,000,000

**COMPLETION DATE:**

2006

**PROGRAM:**

280,000 SF  
768 Beds



# Seattle Municipal Jail

SEATTLE, WASHINGTON



KMD Justice provided Architectural and Engineering design services for the City of Seattle's new municipal jail project. Phase 1 of the project consists of the siting and planning phase for a facility anticipated to be either a new stand-alone, fully operational municipal jail or a major addition to the existing King County Municipal Jail. A stand-alone facility would need to accommodate 640 inmates and associated program and support spaces to meet the combined needs of the north and east King County cities through 2026. A major addition to the existing King County Municipal Jail would need to expand inmate capacity by approximately 1,100 inmates, increase program and support space, and possibly include courtrooms and court operations.

Facility options are dependent upon site selection. The City evaluated six potential sites for this project. Once funding is secured for the selected scheme, KMDJ will provide full A/E services through the construction should the City decide to build a facility.

**CLIENT:**

City of Seattle

**CONSTRUCTION COST:**

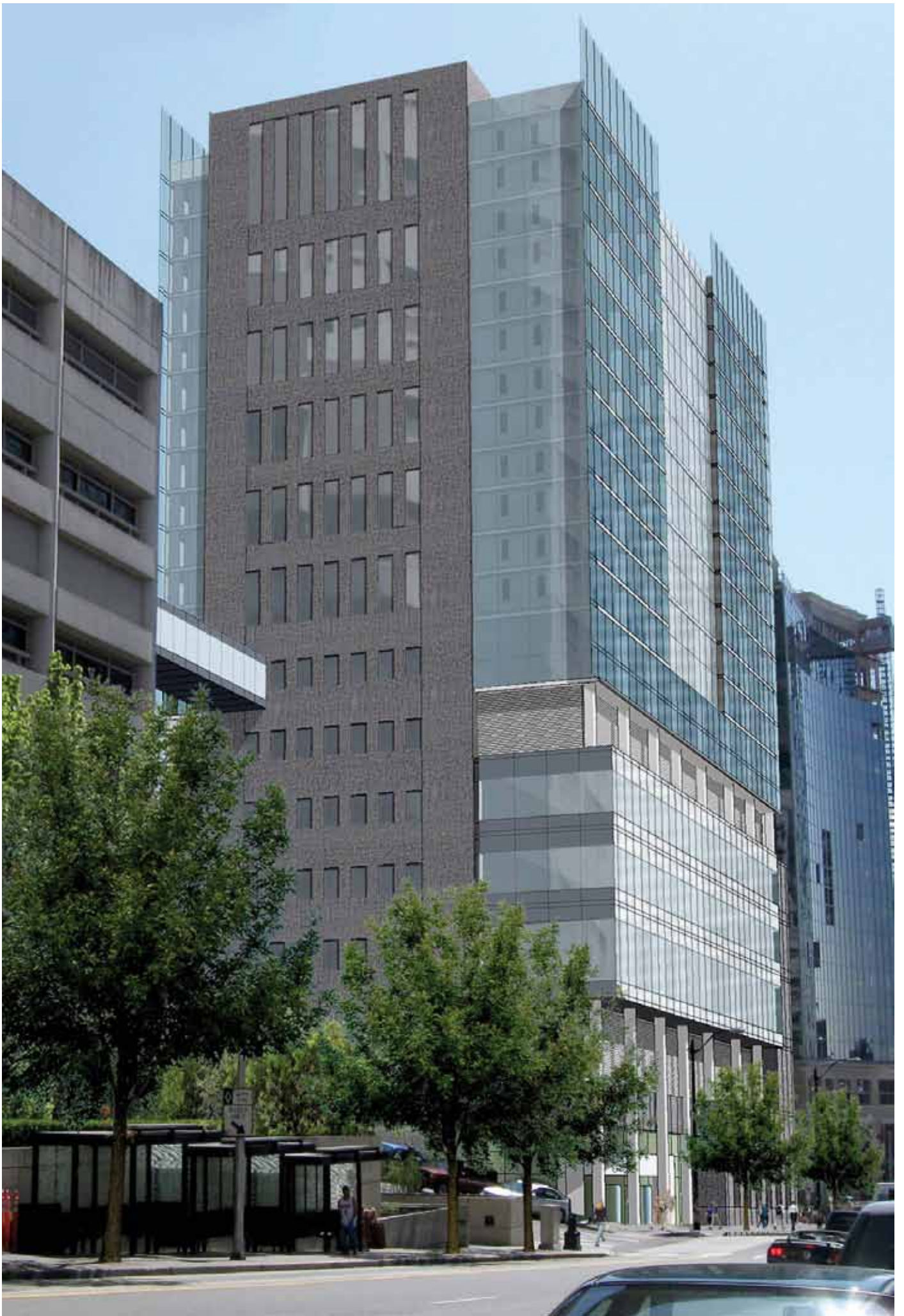
Est. \$92M to \$215M

**COMPLETION DATE:**

2009

**PROGRAM:**

640 beds if standalone  
1,100 beds if addition



# Law Enforcement



**KMD**  
JUSTICE



# Federal Bureau of Investigation Field Office

DALLAS, TEXAS



This multi-building campus-like FBI facility is situated on a 15-acre site in suburban Dallas. The distinctive 5-story, double-winged 250,000 SF building clad in precast concrete metal and glass incorporates a floor plan concept organized around a large inner courtyard, providing employee amenity space and a secure outdoor work environment. The \$36 million project, which includes a four story parking structure and landscaped outer grounds, maximizes sustainability through the use of solar shading, high-performance glazing, and recycled materials. Reflecting the Government's satisfaction with the project the FBI/GSA requested that the developer, architect, and builder (Cowperwood, KMD, and HCB) develop a proposal for a moderately sized multi-level expansion to the facility, which they hope to develop in the near future.

**CLIENT:**  
FBI/GSA

**CONSTRUCTION  
COST:**  
\$36,000,000

**COMPLETION  
DATE:**  
2002

**PROGRAM:**  
250,000 SF  
Five Floors  
370-car garage



# City of Brentwood Police Facility

BRENTWOOD, CALIFORNIA



KMD was brought on by the City of Brentwood after they had spent almost two years working with other architects - one who was unable to bring the project within the allowable budget (as a new building), and another who went out of business during design (of the renovated facility). KMD subsequently re-planned the facility to better reflect the Police Department's actual operations and to make better use of available space, and went on to complete construction documents, bid and construction-phase services. The finished project gives the Police Department adequate space to effectively operate their facility into the next 10 to 15 years, and provides them with a stately and welcome presence within the City.

#### **CONSTRUCTION**

##### **COST:**

\$4,200,000 est

##### **COMPLETION**

##### **DATE:**

Design: July 2004

Construction: Dec 2004

##### **PROJECT SIZE:**

57,881SF

Renovation of

existing facility

Design, Bid, Build

##### **CLIENT:**

City of Brentwood



# City of Belmont Police Department

BELMONT, KANSAS

The City of Belmont had completed a fully developed set of construction documents for a project budgeted at \$5.2 million but estimated at \$7.4 million. Unable to value engineer (VE) the project to the required budget with the existing design team, the City engaged KMD Justice to assist. The implementation parameters were to provide cost savings and technical/planning alternatives to bring the project within budget while retaining the integrity of the approved existing design. The original budget was adjusted to \$6.4 million due to the addition of a number of new project components, including council chambers, site enhancements, and photovoltaic panels on the roof.

Project scope was for the conversion of the existing City Hall building into the City Police Department and included a full seismic upgrade and additional architectural/engineering services to modify the drawings and specifications to establish lump sum construction bids within the project budget. The KMD Justice project team reviewed all existing technical documentation to devise acceptable Value Engineering strategies for the re-engineering of the facility, both structural and in terms of MEP systems and re-planning as required to facilitate structural changes.

# City of Berkeley Public Safety Building

BERKELEY, CALIFORNIA

KMD Justice provided bridge architecture services to develop drawings and performance specifications to establish a competitive lump sum bid for design/build. Services included site planning, building planning, and technical documentation. Planning services included meetings with the police and fire departments and coordinating reviews and approvals from the State Fire Marshal and Board of Corrections regarding holding facility design. The facility includes an 8,800 SF detention facility, fire department headquarters, police department headquarters, I.D. Laboratory, staff locker rooms, exercise room and shooting range.

## CONSTRUCTION

### COST:

\$6,800,000

### COMPLETION

### DATE:

2004

### PROJECT SIZE:

43,600 GSF Renovation

8,000 GSF New

Construction

### CLIENT:

City of Belmont,

California

## CONSTRUCTION

### COST:

\$13,000,000

### COMPLETION

### DATE:

1999

### PROJECT SIZE:

60,000 GSF

Bridge Architectural

Aervices

### CLIENT:

City of Berkeley,

California



# Sheriff's Office, Columbia County Jail and Community Corrections Facility

ST. HELENS, OREGON

KMD Justice provided pre-bond levy architectural planning and conceptual design services for Columbia County's proposed Jail and Justice Facility project located 30 miles west of Portland, Oregon. A successful bond election in November 1998 secured the financing to construct the facility, and KMDJ then proceeded with full architectural services. Project elements for the 222-bed facility include a multi-classification adult county jail, Sheriff's office, parole/probation, a video arraignment/arraignment court, a work release center, and community counseling offices.

**CLIENT:**

Columbia County

**CONSTRUCTION**

**COST:**

\$11,472,820 GMP

**COMPLETION**

**DATE:**

2001

**PROGRAM:**

55,317 SF

222 Beds

# Federal Bureau of Investigation Field Office

LAS VEGAS, NEVADA

The Las Vegas FBI field office is designed to provide office space for FBI personnel along with a vehicle maintenance facility on the ground floor. The project also includes a two-story parking deck, adjacent to the building. The building expression is articulated to fit harmoniously into the hot Las Vegas climate, utilizing warm-colored stone and pre-cast concrete, along with deep-set windows that are shaded from the south and west sun.

**CLIENT:**

FBI/GSA

**COMPLETION**

**DATE:**

2002





# Selected PROJECT AWARDS

KMDJ has produced several nationally recognized, industry-leading projects and has firmly established its reputation as a leader in justice architecture.

**BRUCE R. THOMPSON US COURTHOUSE AND  
FEDERAL BUILDING  
RENO, NEVADA**

US GSA/OMB 1997 Award  
AIA Justice Facilities Review

**BUREAU OF PRISONS, MULTI-PURPOSE CRIMINAL  
JUSTICE FACILITY  
WILMINGTON, DELAWARE**

AIA Justice Facilities Review  
1982–1983 Citation Award

**CLALLAM COUNTY JUVENILE SERVICES FACILITY  
PORT ANGELES, WASHINGTON**

AIA Justice Facilities Review 1997–1998

**COALINGA STATE HOSPITAL  
COALINGA, CALIFORNIA**

AIA Justice Facilities Review 2006–2007  
Certificate of Merit

**CONTRA COSTA COUNTY JUVENILE HALL  
EXPANSION**

**MARTINEZ, CALIFORNIA**  
AIA Justice Facilities Review 2003–2004

**FEDERAL BUREAU OF PRISONS  
FEDERAL CORRECTIONAL INSTITUTION  
BERLIN, NEW HAMPSHIRE**

DBIA National Design-Build Merit Award Winner,  
Correctional Facilities, 2011

**FEDERAL BUREAU OF PRISONS - US PENITENTIARY,  
FEDERAL PRISON CAMP MCCREARY COUNTY  
MCCREARY COUNTY, KENTUCKY**

Marvin M Black Award,  
Excellence in Partnering Award 2003  
Design-Build Institute of America (DBIA)  
National Design-Build Award 2005

**FEDERAL BUREAU OF PRISONS  
US PENITENTIARY VICTORVILLE,  
FEDERAL CORRECTIONAL INSTITUTION  
VICTORVILLE, CALIFORNIA**

Marvin M Black Award,  
Excellence in Partnering Award 2004

**FEDERAL BUREAU OF PRISONS, FEDERAL  
CORRECTIONAL COMPLEX  
VICTORVILLE, CALIFORNIA**

AIA Justice Facilities Review 2000–2001

**FRESNO COUNTY JUVENILE JUSTICE CAMPUS  
FRESNO, CALIFORNIA**

AIA Justice Facilities Review 2000–2001

**HUDSON COUNTY DETENTION CENTER EXPANSION  
KEARNY, NEW JERSEY**

AIA Justice Facilities Review 2003–2004

**KERN COUNTY JUVENILE TREATMENT FACILITY  
BAKERSFIELD, CALIFORNIA**

AIA Justice Facilities Review 2005–2006 Certificate of Merit

**KLAMATH COUNTY COURTHOUSE  
KLAMATH FALLS, OREGON**

Oregon AIA Design Award  
AIA Justice Facilities Review  
1998–1999 Citation Award

**LANE COUNTY JUVENILE JUSTICE CENTER  
AT JOHN SERBU YOUTH CAMPUS  
EUGENE, OREGON**

AIA Justice Facilities Review 2001–2002  
Citation Award

**MARION COUNTY JUVENILE DETENTION FACILITY  
SALEM, OREGON**

Daily Journal of Commerce, Top Projects of 2005

**MARTINEZ DETENTION FACILITY,  
CONTRA COSTA ADULT DETENTION FACILITY  
MARTINEZ, CALIFORNIA**

Prestressed Concrete Institute 1983: Special Recognition in the Creative Design Award

**MENDOCINO COUNTY REHABILITATION FACILITY  
UKIAH, CALIFORNIA**

Bay Area Honor Awards Program 1978

**MULTNOMAH COUNTY JUVENILE JUSTICE  
COMPLEX  
PORTLAND, OREGON**

AIA Justice Facilities Review 1997–1998

**NEW YORK JUVENILE JUSTICE DETENTION  
FACILITY**

**BROOKLYN, NEW YORK**

AIA Justice Facilities Review

1998–1999 Citation Award

Correctional Building News January 1998:

“Facility of the Month” Award

**OAKCREEK YOUTH CORRECTIONAL FACILITY  
ALBANY, OREGON**

AIA Justice Facilities Review 1998–1999

**OAKLAND FEDERAL BUILDING  
OAKLAND, CALIFORNIA**

AIA San Francisco Chapter 1993 Honor Award

Design Achievement Award

US GSA 1996 Design Citation Award

Presidential Design Award

TOBY Award 1998

EPA Energy Conversation Award

**PASO ROBLES SUPERIOR COURT  
PASO ROBLES, CALIFORNIA**

AIA Justice Facilities Review 2003–2004

**RIDGE VIEW YOUTH SERVICE CENTER  
AURORA, COLORADO**

Colorado Construction 2001:

Outstanding Public Project

Colorado Construction 2000: Top Public Project, #3, &

Top Overall Project, #9

AIA Justice Facilities Review 2003–2004

**SAN MATEO COUNTY YOUTH CENTER  
SAN MATEO, CALIFORNIA**

AIA’s Academy of Architecture for Justice Knowledge

Community (AAJ) Justice Facilities Review 2007

Honorable Mention Sustainable San Mateo County March, 2008

Certificate of Recognition California State Senate

California Legislature Assembly March, 2008

**SAN MATEO COUNTY GIRL’S CAMP  
SAN MATEO, CALIFORNIA**

AIA’s Academy of Architecture for Justice Knowledge Community (AAJ)

Justice Facilities Review 2007

**SANTA CLARA COUNTY JUVENILE HALL  
SAN JOSE, CALIFORNIA**

AIA Justice Facilities Review 1999–2000

**SANTA CRUZ COUNTY MAIN JAIL, PHASE I  
SANTA CRUZ, CALIFORNIA**

AIA 1982 ACA Award

**SANTA CRUZ COUNTY MAIN JAIL, PHASE II  
SANTA CRUZ, CALIFORNIA**

AIA 1987 ACA Award

**SOLANO COUNTY JUVENILE DETENTION FACILITY  
FAIRFIELD, CALIFORNIA**

AIA’s Academy of Architecture for Justice Knowledge Community (AAJ)

Justice Facilities Review 2007

**TAFT CORRECTIONAL INSTITUTION  
TAFT, CALIFORNIA**

Marvin M Black Award 1996

AIA Justice Facilities Review 1998–1999

**THURSTON COUNTY JUVENILE JUSTICE FACILITY  
TUMWATER, WASHINGTON**

AIA Justice Facilities Review 2000–2001

Citation Award

**TILLAMOOK COUNTY JAIL AND JUSTICE CENTER  
TILLAMOOK, OREGON**

AIA Justice Facilities Review 1999–2000

**TULARE COUNTY JUVENILE DETENTION CENTER  
VISALIA, CALIFORNIA**

AIA Justice Facilities Review 2000–2001

**UPSTATE CORRECTIONAL FACILITY  
MALONE, NEW YORK**

New York Construction 1999: Top Ten Project Award

**VENTURA COUNTY JUVENILE JUSTICE CENTER  
OXNARD, CA**

AIA Justice Facilities Review 2005-2006 Certificate of Merit

**WASHOE COUNTY JAN EVANS JUVENILE  
DETENTION FACILITY**

**RENO, NEVADA**

Washoe County Design Review,

Award of Merit 2004

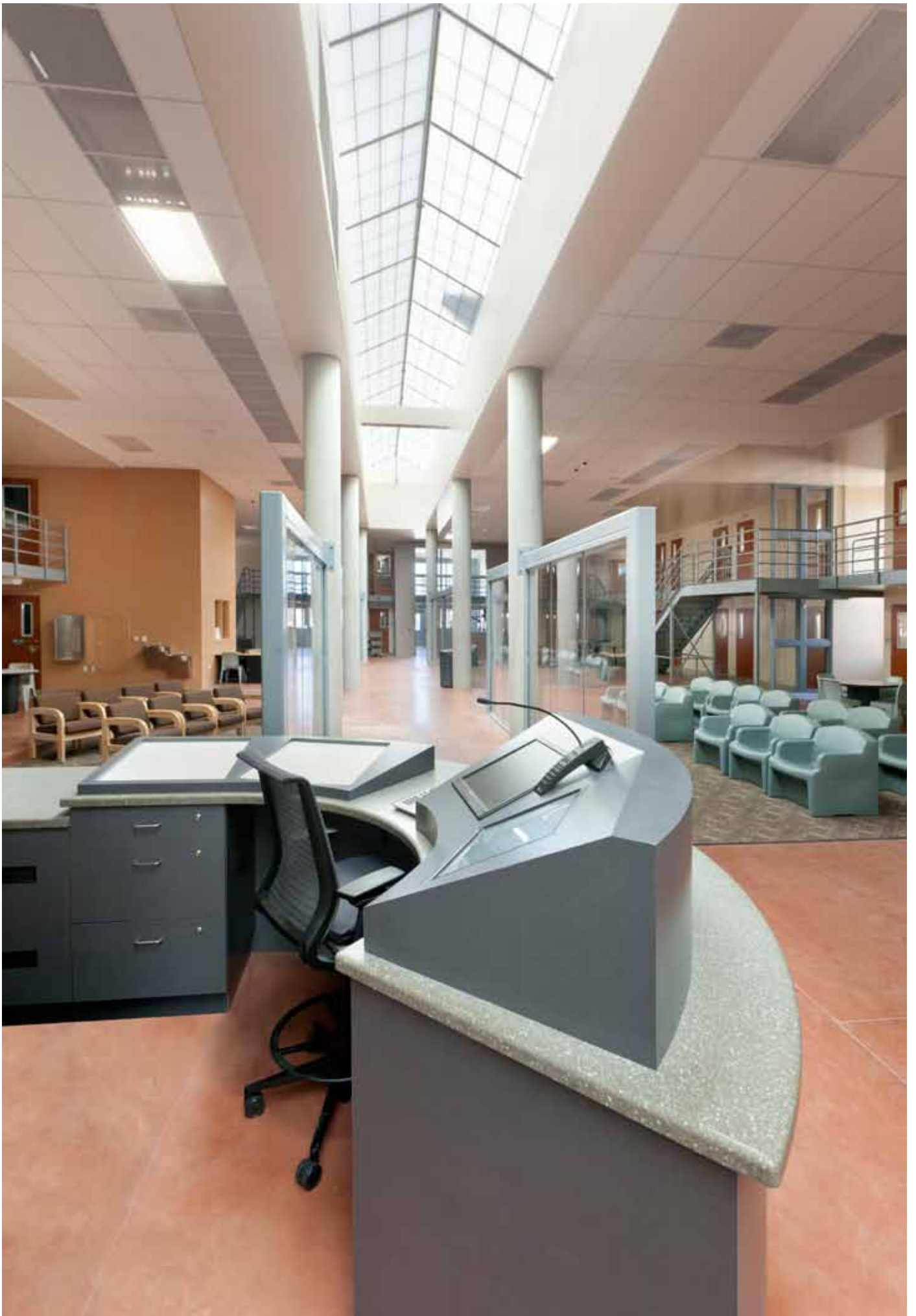


Photo: Naval Consolidated Brig Miramar

# KMD

---

## ARCHITECTS

[www.kmdjustice.com](http://www.kmdjustice.com)  
[www.kmdarchitects.com](http://www.kmdarchitects.com)

222 Vallejo Street  
San Francisco, CA 94111  
**Tel** (415) 398-5191 **Toll Free** (800) 822-5191  
**Fax** (415) 394-7158

**Sean Huang**, Design Principal  
Suite 2604, Plot B, Business Central Tower  
Tecom, Sheikh Zayed Road, Dubai, UAE  
P.O. Box 487592  
**Tel** +971 44539661 **Fax** +971 44539662  
**USA Mobile** +1-415-235-5319 **UAE Mobile** +971-5-67593258  
[huang@kmd-arch.com](mailto:huang@kmd-arch.com)